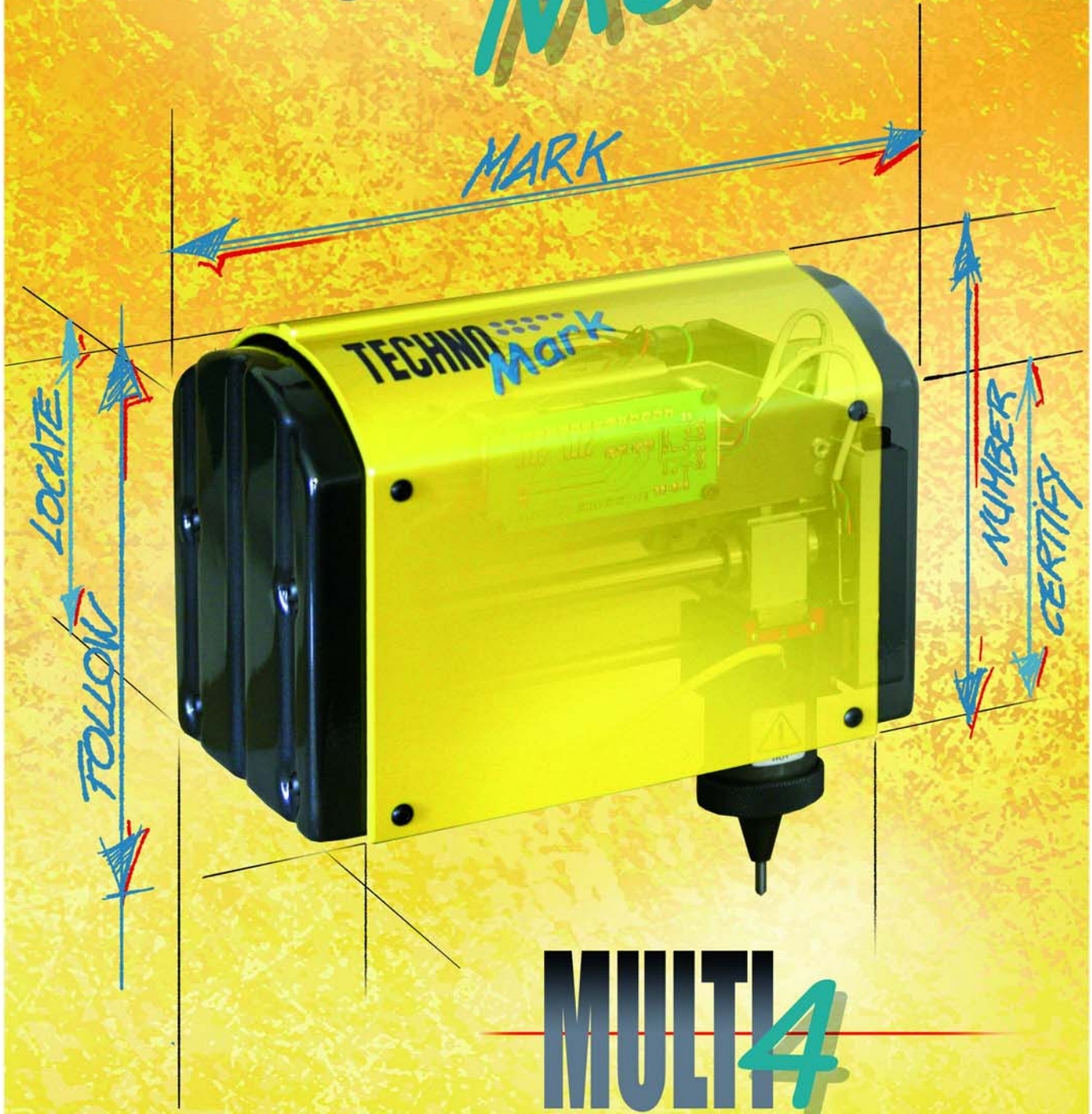


TECHNO Mark



MODULAR & INTELLIGENT MARKING

TECHNO^{Mark}

MULTI4

YESTERDAY

1999

TECHNO^{Mark}

creates the 4 in 1 concept by designing MULTI4, the first ever modular marking tool.

1 single machine and 4 different possible configurations.

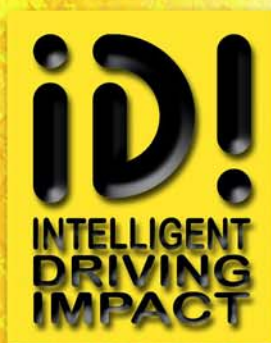


2004 :

For successful increase in MULTI4 sales,

TECHNO^{Mark}

was awarded with the 2004 Classe-export Trophy for the best export growth for the last 3 years.



TODAY

TECHNO^{Mark}

offers a new generation MULTI4 with the exclusive IDI* function.

This unique function provides more consistent marks and repeatable depth for flat and uneven surfaces. IDI also helps eliminate unnecessary maintenance procedures.

* International Patent Application PCT/FR2006/001246





THE REVOLUTION
IN THE WORLD OF MARKING
WITH THE 4 in 1 CONCEPT

MARKING

Permanent marking



READING

Data Matrix codes and characters
(OCR, OCRA...) reading



INTEGRATION

Complete marking station
designed by **TECHNO Mark**



MULTI4 INTEGRATED MODEL

COMPACT

Easy to integrate into your production lines

ADAPTABLE

May be controlled by an external system using a RS 232, I/O or ethernet connection

HIGHLY PRODUCTIVE

Marks several characters per second

RELIABLE

Industrial design incorporating high quality components



MULTI4

4 in 1
A WINNING
CONCEPT

MULTI4 HAND HELD GUN

FULLY PORTABLE

A handheld, programmable marking unit (battery mode optional)

LIGHT AND EASY TO HANDLE

It works in all positions

ROBUST AND COMPACT

The MULTI4 gun can be used in workshops as well as outdoors to mark small, medium and large pieces

ECONOMICAL

Low operating and maintenance costs



Rotary D axis



Bar end tool



Automatic plate feeder



4
in 1
MARKING
CONCEPT



Conversion time < 10 seconds without any tool

MULTI4 COMBO

MULTI-PURPOSE

The same tool can be used to mark the smallest as well as the largest pieces

FLEXIBLE

Only a few seconds to change from a bench top to a handheld marking gun

EASY TO USE

User friendly, fast and easy to use

EASY TO UPGRADE

Optional accessories increase functionality of the marking system



MULTI4 BENCH TOP MODEL



PRECISE

Easy to read, high quality permanent marking

EFFECTIVE

For small and medium sized pieces, whether a single part or for mass production

EASY TO USE

User-friendly software. Enter the required marking data in seconds

SECURE

Marking layouts stored in internal memory with optional backup software



Multi 4 sensor (3 axis)
Automatic parts detection





OFFERS 2 MARKING TECHNOLOGIES





TECHNOmark DOT PEEN MARKING

is a leader in electro-mechanical dot peen marking technology. This technology is based on forming individual dots (spherical recesses) with a carbide stylus incorporating low stress point geometries. Parts up to 63Rc can be permanently marked. Carbon steel, alloy steel, stainless steel, aluminium, nickel alloys, brass, copper and many other materials can be successfully marked with this marking method.

TECHNOmark SCRIBING*

offers scribing solutions as well. This technology is based on dragging the carbide or diamond stylus through the material to form highly readable, continuous line characters. This solution is ideal in situations where marking impact noise is an issue or where highly defined characters are required.

* Available in BENCH TOP and INTEGRATOR VERSIONS ONLY.

MULTI TECHNICAL FEATURES		
MARKING WINDOWS (inches)	MARKING HEAD L x W x H (inches)	WEIGHT (lbs)
 Standard 120 4.72" x 2.36"	8.70" x 4.96" x 8.40"	9.70
 Compact 50 1.96" x 2.36"	5.94" x 4.96" x 8.40"	8.37
 Large 200 7.87" x 2.36"	11.85" x 4.96" x 8.40"	11.46
 Extra large 250 9.84" x 9.84"	14.17" x 14.96" x 8.66"	20.90
CONTROL BOX		
AC POWER	12" x 11.41" x 7.28"	6.6
BATTERY POWER	12" x 11.41" x 7.28"	9.2

SOFTWARE CAPACITY

- Alpha-numeric marking
- Programmable character size
- Discrete dot marking or continuous line fonts
- OCR and OCRA font
- Marking at angles, circular, straight line, mirror and italic marking
- **id!** Intelligent Driving Impact
- Serial numbers, dates, time programming
- Storage capacity : 4 000 files
- High-definition graphic view with zoom functions
- Easy shift function

OPTIONAL SOFTWARE :

- **TECHNOLOG** : Logos creation
- **TECHNOPROD** : Production follow-up
- **TECHNOSAVE** : File transfer
- **TECHNOWINDOWS** : Operates with Windows operating system



Convenient !
Quick installation
of the battery pack



Transport trolley

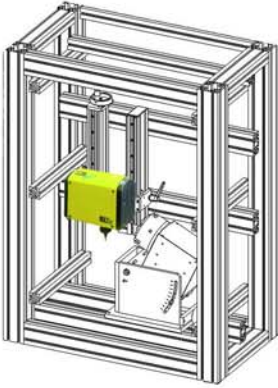


Clever !
Quick adjustment
"QUICK SHIFT"

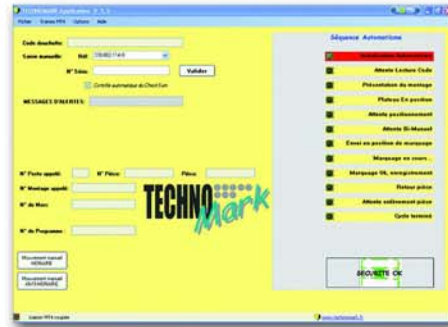


TURNKEY SOLUTIONS

Our experienced design department offers complete tracking solutions (Integration of hardware and software)



Complete workstation with MULTI4 integrator and angled rotary axis



Custom Windows based marking software created to customer requirements

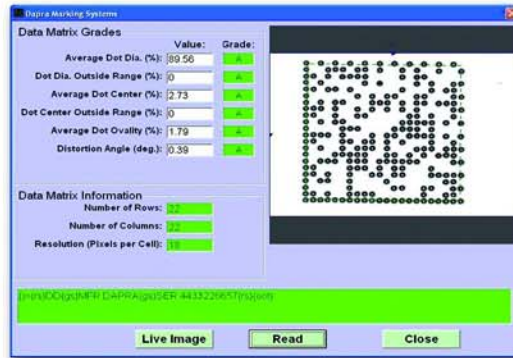


READING SOLUTIONS

TECHNOMARK offers a complete range of reading and verification systems



Reading on a cylindrical part



Data Matrix verification software



Bluetooth / wired Data Matrix reader



Fixed position verifier



Handheld verifier for AIM DPM



Every day, all day, all around the world*, a **MULTI4** marking machine is operating.



CUSTOMER SERVICE

DAPRA's team is available to satisfy each of your requirement :

PRE-SALES SERVICE :

- Free sample marking
- Feasibility study
- Demonstration available on-site

AFTER-SALES SERVICE :

- Phone assistance
- Maintenance and repairs
- Servicing on site
- Product training adapted to your needs
- Equipment rental...

* Several thousand **TECHNOmark** marking machine are currently in use on all 5 continents.

OUR CUSTOMERS ARE OUR BEST ADVERTISING :

The **MULTI4** marking machine has been so successful that major industrial groups rely on **TECHNOMARK'S** marking technology to meet all their marking needs.

TECHNOmark's know-how - including patented modular and intelligent marking systems - is currently used in many different industries

- Automotive
- Aerospace
- Defense
- Nuclear energy
- Machine shops
- Electronics
- Food processing
- Medical Instrument / Implants
- Pharmaceutical
- Petroleum

ENVIRONMENT :

- Electrical power 90 to 240 V
- Battery power 24 V
- Power 200 W
- Frequency 50 to 60 Hz
- Usage temperature 32 to 115° F (0 to 45° C)

STANDARDS :

- Machinery directives : 98/392/CEE
- Electro-magnetic Compatibility : 89/336/CEE
- Low voltage directives : 73/23/CEE
- FCC directive - chapter 15



Each product manufactured by **TECHNOmark** is inspected to strict quality control.



66 Granby Street,
BLOOMFIELD CT 06002 - USA
Tel. : 860 286 8728 - Fax : 860 726 9555
E-mail : sales@dapramarking.com - Web site : www.dapramarking.com

